

DATA CENTER

SUSTAINABILITY COMPLIANCE REPORTING SOLUTION

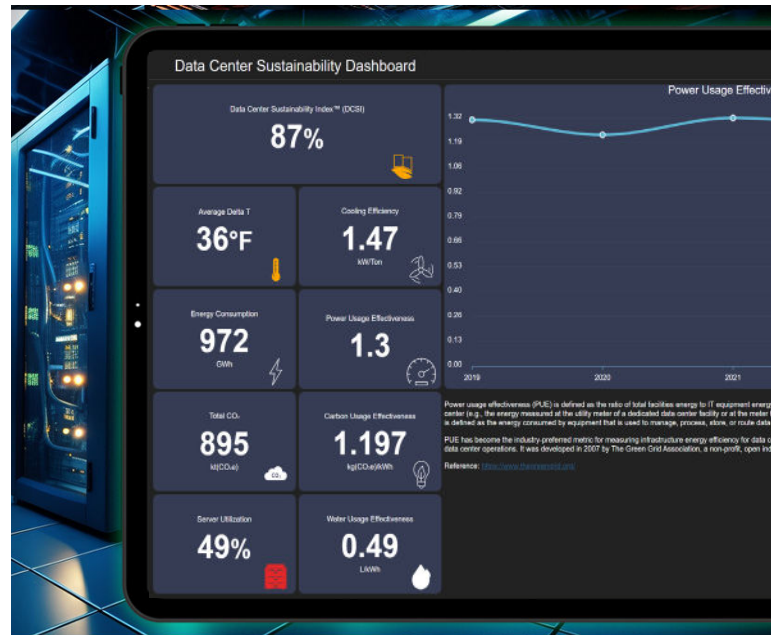
Compliance is a top priority for businesses of all sizes. With so many emerging reporting regulations to keep track of, it can be challenging to know where to start. The Data Center Sustainability Compliance Reporting Solution, from Nlyte Software, simplifies these processes. It offers a holistic dashboard for real-time sustainability measures and a flexible reporting framework with industry-defined calculations and metrics to support ESG and sustainability compliance reporting mandates from emerging regulations. This comprehensive solution, featuring the Nlyte Real-Time Data Center Sustainability Dashboard and the Annualized Data Center Compliance Report, empowers data center operators with real-time monitoring and detailed annual reporting capabilities. It facilitates adherence to the upcoming legislated mandates for data centers, and also promotes enhanced operational efficiency and environmental sustainability. By integrating this solution, data centers can seamlessly navigate the complexities of compliance while advancing towards a greener and more efficient future.

The Nlyte Software solution is a two-pronged approach:

Nlyte Real-Time Data Center Sustainability Dashboard: This cutting-edge dashboard provides real-time insights into energy consumption and efficiency metrics. It is a tool that transforms data into actionable intelligence, enabling operators to make swift, informed decisions that align with sustainability goals.

Annualized Data Center Compliance Report: Complementary to our dashboard, this comprehensive report offers an accounting of key energy efficiency metrics. It ensures that all data centers can accurately and effectively report their compliance with the legislated mandates. The report includes an array of prescriptive metrics that are crucial for assessing the environmental impact and energy efficiency of data centers. These metrics include, but are not limited to:

- **Renewable Energy Factor (REF):** This metric measures the proportion of energy consumed by the data center that is sourced from renewable energy. It highlights the data center's commitment to sustainable energy sources.
- **Carbon Usage Effectiveness (CUE):** CUE assesses the carbon footprint of the data center. It calculates the total greenhouse gas emissions caused by the data center's energy consumption, providing insight into its environmental impact.
- **Total Data Center Energy Consumption:** This straightforward metric quantifies the total amount of energy consumed by the data center over a specific period, usually a year. It serves as a baseline for evaluating energy efficiency improvements.
- **Cooling Efficiency Ratio (CER):** This ratio evaluates the efficiency of the data center's cooling systems. It compares the energy used for cooling to the total energy consumption, helping to identify opportunities for enhancing cooling efficiency.
- **Energy Reuse Factor (ERF):** ERF measures the effectiveness of the data center in reusing energy. It calculates the proportion of energy that is recycled within the facility, for example, using waste heat for other purposes.
- **Power Usage Effectiveness (PUE):** One of the most used metrics, PUE compares the total energy consumed by the data center to the energy consumed by its IT equipment. A lower PUE indicates greater energy efficiency.
- **Water Usage Effectiveness (WUE):** This metric determines the efficiency of water usage in the data center. It is particularly relevant for facilities that use water for cooling, indicating how effectively this resource is being used.
- **IT Equipment Utilization for Servers (ITEUsv):** ITEUsv assesses how efficiently the IT equipment, specifically servers, are utilised. It helps in understanding if the IT equipment is over or under-utilised relative to the energy it consumes.



BENEFITS

- **Compliance Assistance:** Helps data centers meet upcoming EU EED, ESG, SEC carbon sourcing, and California Title 24 reporting requirements.
- **Environmental Impact:** Helps operators minimize their carbon footprint and promote sustainable practices in data center operations.
- **Data-Driven Decisions:** Empowers operators with real-time data for informed decision-making.

FEATURES

- Live tracking of energy use, carbon footprint, and other sustainability metrics.
- Customizable alerts and notifications for deviations from set efficiency targets.
- User-friendly interface for easy access to key data and reports.
- Integration with existing data center infrastructure for seamless data collection.
- Comprehensive coverage of key metrics such as PUE, CUE, IT Equipment Utilization, and more.
- Historical data comparison to track progress and improvements over time.
- Clear, concise formatting for regulatory reporting and internal review.

APPLICATIONS

- Data Centers needing to comply with regional sustainability reporting.
- Organizations aiming to improve their data center's energy efficiency.
- Businesses focusing on reducing their environmental impact.

PREREQUISITES

- **Nlyte Energy Optimiser (NEO) 12.X or higher**
- PN: DCIM-EO-CORE
- **Nlyte System Utilization Monitoring (NSUM)**
- PN: DCIM-SUM-CORE
- **Nlyte Sustainability Compliance Reporting Solution**
- PN: SUSTAINABILITY-CORE



The Data Center Sustainability Dashboard is an essential tool for effectively managing sustainable practices. It offers invaluable insights that significantly enhance your sustainability decision-making processes.

Nlyte Software's Sustainability Compliance solutions offer the necessary tools to track and comply with climate risk disclosures, and other sustainability reporting regulations. Reach out to us now to discover more about how we can assist you in maintaining compliance.

SUSTAINABILITY

Nlyte Software's Data Center Sustainability Compliance Reporting Solution offers a transformative approach for data center operators striving for sustainability. By integrating the Nlyte Real-Time Data Center Sustainability Dashboard and the Annualized Data Center Compliance Report, this solution provides operators with crucial real-time analytics and detailed annual reporting, essential for meeting legislated reporting requirements. It facilitates precise monitoring and management of key sustainability metrics like energy consumption, cooling efficiency, and carbon footprint. This not only facilitates compliance with regulatory mandates but also aids in identifying and implementing energy-saving measures, leading to reduced environmental impact and enhanced operational efficiency.

Nlyte's solution is pivotal in helping data centers evolve into more sustainable, eco-friendly, and efficient facilities.



EU Energy Efficiency Directive (EED) 2024 Report

Nlyte Software

 Nlyte Software

When you're ready to take your data center to the next level of sustainability, we're ready to help.

nlyte.com



Nlyte Software helps teams manage their hybrid infrastructure throughout their entire organization – from desktops, networks, servers, to IoT devices – across facilities, data centers, colocation, edge, and the cloud. Using Nlyte's monitoring, management, inventory, workflow, and analytics capabilities, organizations can automate how they manage their hybrid infrastructure to reduce costs, improve uptime, and helps compliance with regulatory and organizational policies.

Nlyte Software is a part of Carrier Global Corporation, a global leader in intelligent climate and energy solutions.

For more information, visit Nlyte.com or follow Nlyte on LinkedIn.

1150 Roberts Boulevard, Kennesaw, Georgia 30144, United States of America
732-395-6920 • Fax 732-395-6930 | nlyte.com | A Carrier Company

©2023 Carrier. All Rights Reserved. All trademarks used herein are the property of their respective owners.

